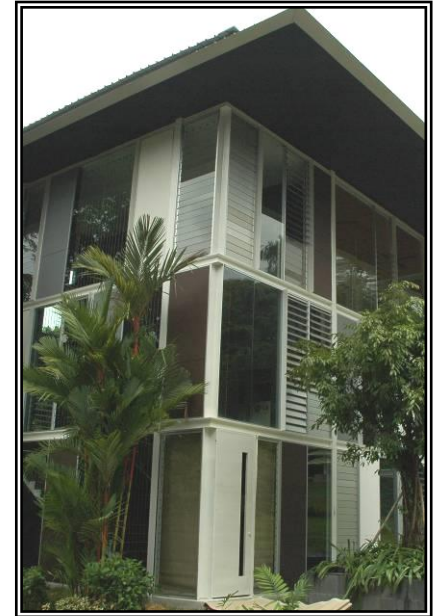


Project – WINE BAR @ Sentosa, Singapore (ART™ Louvre System with aluminium and glass blades)

9-Sept-07



Creative use of aluminium blades, glass and coloured boards gives the building a contemporary look and character.

Louvres provide good ventilation on both sunny and rainy days.



For information on product:

Active Restoration Technology Asia Pte Ltd

Tel: (65) 62614154 Fax: (65) 62623420 E-mail: info@artech.com.sg

ART™
Active Restoration Technology